

**Industry:** Marine

**End User:** Navy

**Application:** Landing Craft Utility (LCU) Ramp Door Hinge Bushing System

**Thordon Grade:** ThorPlas-Blue

**Date of Initial Installation:** September 2017

ThorPlas-Blue provided an excellent long-wearing low maintenance solution and more Navy LCU's have replaced their bronze bushes with ThorPlas-Blue, the most recent refurbishment was in May 2019.

### Challenge:

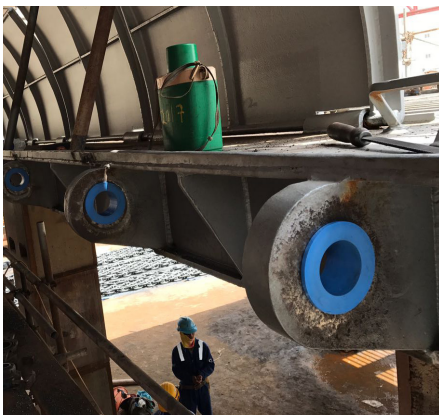
The hinge bushing is located outside the landing ramp, facing the sea elements. When the vessel is sailing, it is impossible to grease the bushing at regular intervals when the ramp door is closed.

Due to the lack of lubrication, the grease combines with dirt, moisture and corrosion particles and became sludge, leading to the following problems:

- Seizing of the pin to the bronze bushes
- Increased wear & damage of the bronze bushes
- The ramp doors did not open and close smoothly.
- Unnecessary maintenance delays to grease the bushings
- Very noisy during opening and closing

### Solution:

In September 2017, and again in May 2019, ThorPlas-Blue was installed to completely eliminate the issues of improper lubrication, seizing, increased wear and delays.



ZERO POLLUTION | HIGH PERFORMANCE | BEARING & SEAL SYSTEMS