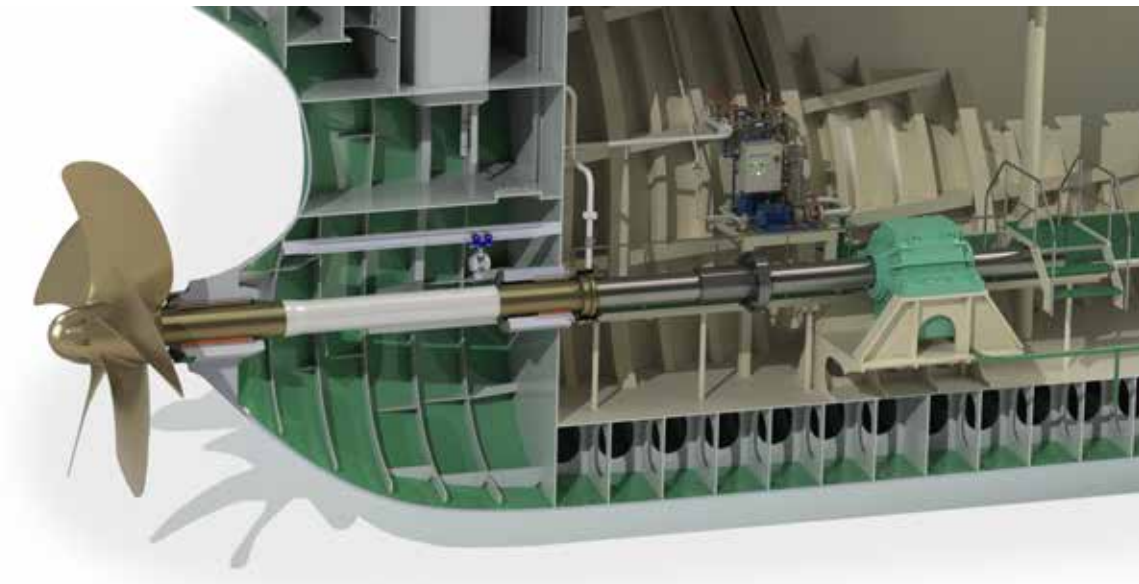


# COMMERCIAL SHIP REFERENCES

SHIPOWNERS USING THORDON  
SEAWATER LUBRICATED PROPELLER SHAFT BEARINGS

Future Compliant Gaining an Eco-Advantage  
Fall 2021



**THORDON**  
THORDON BEARINGS INC.

ZERO POLLUTION | HIGH PERFORMANCE | BEARING & SEAL SYSTEMS



### Algoma Central Corp. (Canada)

8 bulk carriers ranging from 18,583 DWT to 47,800 DWT  
Equipped with COMPAC bearings, WQP & ThorShield  
Delivered: 1999 - 2013  
Seaway Marine, Lakehead Marine (Canada), Chengxi (China)



### Atlantska Plovidba (Croatia)

2–38,000 DWT bulk carriers  
Equipped with COMPAC bearings & WQP  
Delivered: 2014  
Qingshan Shipyard, Wuhan (China)



### COSCO (China)

15 bulk carriers ranging from 32,000 DWT to 38,500 DWT  
Equipped with COMPAC bearings, WQP & ThorShield  
Delivered: 2009 - 2017  
Shanhaiguan, Nangtong, Shanghai, Guangzhou, Fujian Mawei (China)



### CSL Group (Canada)

6 bulk carriers ranging from 33,000 DWT to 74,000 DWT  
Equipped with COMPAC bearings, WQP & ThorShield  
Delivered: 2001 - 2014  
Chengxi, Shanhaiguan, Yangfan (China), Fincantieri Bay Shipbuilding (USA), Hyundai Mipo (South Korea)



### Fuzhou Haitong Shipping (China)

2–51,000 DWT bulk carriers  
Equipped with COMPAC bearings  
Delivered: 2013  
Taizhou Sanfu Ship Engineering (China)



Image: The Maritime Executive

### Interlake Steamships (USA)

1 – 28,000 DWT bulk carrier **on order**  
To be equipped with RiverTough bearings & WQP  
Delivery: 2022  
Fincantieri Bay Shipbuilding (USA)





## Interlake Steamships (USA)

7 bulk carriers ranging from 24,536 DWT to 69,172 DWT  
Equipped with COMPAC bearings (4) & RiverTough bearings (3)  
Delivered: 1998 - 2016  
Fincantieri Bay Shipbuilding (USA)



## Keystone Shipping (USA)

1 –26,011 DWT bulk carrier  
Converted to COMPAC & WQP  
Delivered: 2016  
Fincantieri Bay Shipbuilding (USA)



## Lower Lakes Towing (Canada)

1– 36,245 DWT bulk carrier  
Converted to COMPAC system, WQP & ThorShield  
Delivered: 2014  
Donjon Shipbuilding (USA)



## Polsteam (Poland)

3 –35,500 DWT bulk carriers  
Equipped with COMPAC & WQP  
Delivered: 2016  
Jiangsu Yangzijiang Shipbuilding (China)



## Sinotrans (China)

2–35,000 DWT bulk carriers  
Equipped with COMPAC bearings, WQP & ThorShield  
Delivered: 2010  
CSSC Guangzhou Huangpu Shipbuilding (China)



### LEGEND



**COMPAC**  
Seawater lubricated propeller shaft bearings for blue water



**ThorShield**  
Shaft coating for seawater lubricated propeller shaft bearing systems provides protection against corrosion



**RiverTough**  
Tailshaft bearings for abrasive operating water conditions



**Water Quality Package (WQP)**  
Thordon WQP supplies seawater to the propeller shaft bearings for lubrication and cooling while removing abrasives



**SXL**  
Seawater lubricated propeller shaft bearings & grease free rudder bearings



**Bearing Conditioning Monitoring (BCM)**  
Thordon BCM system enables real time observation of propeller shaft bearing behaviour



## Alaskan Tanker Company (USA)

4 – 193,049 DWT oil tankers  
Equipped with COMPAC bearings  
Delivered: 2004 - 2006  
NASSCO (USA)



Photo: Krispen Atkinson



## COSCO (China)

4–7,500 DWT tankers  
Equipped with COMPAC system, WQP & ThorShield  
Delivered: 2018  
Chengxi Shipyard (China)



## ConocoPhillips (USA)

5 – 141,739 DWT oil tankers  
Equipped with COMPAC bearings, WQP & ThorShield  
Converted: 2010 - 2012  
Sembawang Shipyard (Singapore)



## Fangchenggang City Hengsheng (China)

2 tankers ranging from 2,500 DWT to 3,050 DWT  
Equipped with COMPAC bearings  
Delivered: 2008 - 2012  
Wuhan Nanhua, Hubei Huanggang Shipyard (China)



## Fortune Marine Company Ltd. (South Korea)

4–6,500 DWT tankers  
Equipped with COMPAC bearings  
Delivered: 2008 - 2009  
Pharung Shipyard (Vietnam)



## Group Desgagnés (Canada)

4 – 15,100DWT tankers  
Equipped with COMPAC bearings & WQP  
Delivered: 2017-2019  
Besiktas Shipyard (Turkey)







## Keo Young Shipping Co. Ltd. (South Korea)

2 Tankers ranging from 2,747 DWT to 3,919 DWT  
Equipped with COMPAC bearings  
Delivered: 2007 - 2008  
Onishigumi Zosensho (Japan)



## Lower Lakes Towing (Canada)

1 – 14,986 DWT tanker  
Converted to COMPAC system, WQP & ThorShield  
Delivered: 2015  
Chengxi Shipyard (China)



## Orkin Ship Management (Malaysia)

3 tankers ranging from 9,000 DWT to 14,500 DWT **on order**  
To be equipped with COMPAC bearings & WQP  
Delivery: 2021  
Fujian Southwest Shipyard (China)



## Orkin Ship Management (Malaysia)

2 – 9,000 DWT tankers  
Equipped with COMPAC bearings & WQP  
Delivered: 2021  
Fujian Southwest Shipyard (China)



## Palmali Group (Turkey)

11 – 6,600 DWT tankers  
Equipped with COMPAC bearings  
Delivered: 1999 - 2009  
BLTR (Estonia), Volgograd, Krasnoye Sormovo (Russia)



## Xin Yuan Ocean Shipping (China)

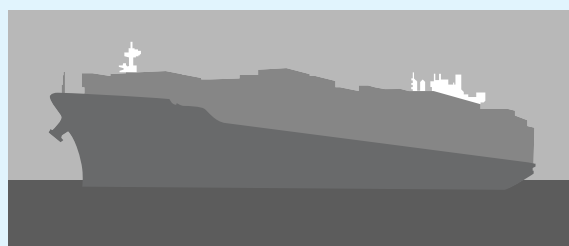
2 – 12,000 DWT asphalt/bitumen tankers  
Equipped with COMPAC bearings  
Delivered: 2011 - 2012  
COSCO, Navy 4807 Shipyard (China)





### Carisbrooke Shipping Ltd. (UK)

8 cargo vessels – 4 ships at 8,500 DWT & 4 ships at 10,200 DWT  
Equipped with COMPAC bearings  
Delivered: 2011 - 2013  
Jiangsu Yangzijiang Shipbuilding (China)



### COSCO (China)

4 – 62,000 DWT container /dry cargo ships **on order**  
To be equipped with COMPAC system, WQP & ThorShield  
Delivery: 2022  
COSCO Dalian Shipyard (China)



### COSCO (China)

7 – 62,000 DWT container /dry cargo vessels  
Equipped with COMPAC bearings & ThorShield  
Delivered: 2020-2021  
COSCO Dalian Shipyard (China)



### COSCO (China)

3 – 62,000 DWT cargo ships  
Equipped with COMPAC system & WQP  
Delivered: 2018-2019  
COSCO Dalian Shipyard (China)



### COSCO (China)

6 – 28,000 DWT & 8 – 36,000 DWT container / dry cargo vessels  
Equipped with COMPAC bearings, WQP & ThorShield  
Delivered: 2013 - 2017  
Nangtong, Guangzhou, Shanghai Shipyard (China)



### Flinter Groningen (Netherlands)

26 dry cargo ships ranging from 3,500 DWT to 9,200 DWT  
Equipped with COMPAC bearings  
Delivered: 2002 - 2013  
Kiran (Turkey), Haiphong (Vietnam), Ferus Smit (Germany),  
Westerbroek, Bodewes Shipyard (Netherlands)





## **Lithuanian Shipping Co. (Lithuania)**

1 – 4,470 DWT & 1 – 5,836 DWT 221 TEU container ships  
Equipped with COMPAC bearings  
Delivered: 2006 - 2007  
Western Shipyard (Lithuania), Tallin (Estonia)



## **Log-In Logistica Intermodal SA (Brazil)**

1 – 37,000 DWT 2,700 TEU container ship  
Equipped with COMPAC system, WQP, ThorShield & BCM  
Delivered: 2019  
Guangzhou Wenchong (China)



## **Lomar Shipping (United Kingdom)**

2 – 37,000 DWT 2700 TEU container ships  
Equipped with COMPAC system, WQP, ThorShield & BCM  
Delivered: 2018  
Guangzhou Wenchong Shipyard (China)



## **Matson Navigation Co. Inc. (USA)**

2 – 51,400 DWT 3600 TEU container ships  
Equipped with COMPAC system, WQP & ThorShield  
Delivered: 2018 - 2019  
Philadelphia Shipyard (USA)



## **Meriaura Group (Finland) - VG - Shipping**

2 – 4,700 DWT dry cargo vessels  
Equipped with COMPAC bearings  
Delivered: 2016  
Royal Bodewes (Netherlands)



## **Northwestern Shipping (Russia)**

11 container ships ranging from 1,706 DWT to 3,030 DWT 118 TEU  
Equipped with COMPAC bearings  
Delivered: 1993 - 2001  
Volgograd Shipbuilding (Russia)







### **Tanto Intim Line (Indonesia)**

2–4,705 DWT general cargo ships  
Equipped with COMPAC bearings  
Delivered: 1995, 1997  
Keppel (Singapore), Novorossiysk Ship Repair (Russia)



### **Tropical Shipping (USA)**

2 – 4,233 DWT 300TEU & 4- 20,300DWT 1148TEU container ships  
Equipped with COMPAC system, WQP & ThorShield  
Delivered: 2018-2019  
Guangzhou Wenchong Shipyard (China)



### **Unitra Maritime Co. Ltd. (Japan)**

3–9,667 DWT dry cargo vessels  
Equipped with COMPAC bearings  
Delivered: 2008  
Nanjing Wujiazui Shipbuilding (China)



### **X-Press Feeders (Singapore)**

2 – 37,000 DWT 2700 TEU container ships  
Equipped with COMPAC system, WQP, ThorShield & BCM  
Delivered: 2020-2021  
Zhoushan Changhong (China)

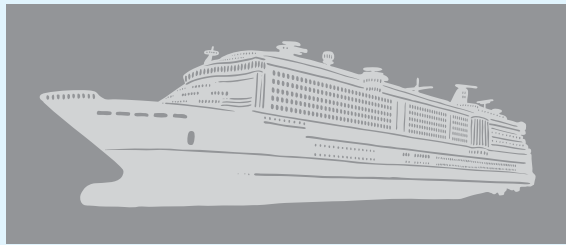






## Disney Cruise Lines (USA)

4 cruise ships ranging from 85,000 GT to 124,000 GT  
Equipped with COMPAC bearings  
Delivered: 1998 - 1999, 2011 - 2012  
Fincantieri (Italy), Meyer Werft (Germany)



## MSC Cruises (Switzerland)

1 – 64,000 GT & 1 – 169,380 GT cruise ships **on order**  
To be equipped with COMPAC bearings  
Delivery: 2022-2023  
Fincantieri (Italy)



## MSC Cruises (Switzerland)

2 – 154,000 GT cruise ships  
Equipped with COMPAC bearings  
Delivered: 2018  
Fincantieri (Italy)



## Oceania Cruises (USA)

2 – 65,000 GT cruise ships  
Equipped with COMPAC bearings  
Delivered: 2010 - 2011  
Fincantieri (Italy)



## P&O Cruises (UK) - Carnival Corp.

3 cruise ships ranging from 116,000 GT to 143,730 GT  
Equipped with COMPAC bearings  
Delivered: 2008 - 2015  
Fincantieri (Italy)





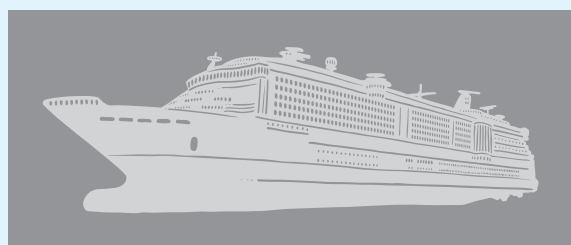
## Princess Cruise Lines (USA) – Carnival Corp

1 – 145,000 GT cruise ship **on order**  
To be equipped with COMPAC bearings  
Delivery: 2022  
Fincantieri (Italy)



## Princess Cruise Lines (USA) – Carnival Corp

14 cruise ships ranging from 108,000 GT to 145,000 GT  
Equipped with COMPAC bearings  
Delivered: 1998 - 2020  
Fincantieri (Italy), MHI (Japan)



## Regent Seven Seas Cruises (USA) – Norwegian Cruise Lines

1 – 67,000 GT cruise ship **on order**  
To be equipped with COMPAC bearings  
Delivery: 2023  
Fincantieri (Italy)



Photo: Richard Fontaine

## Regent Seven Seas Cruises (USA) – Norwegian Cruise Lines

1 – 56,000 GT cruise ship  
Equipped with COMPAC bearings  
Delivered: 2020  
Fincantieri (Italy)



## Regent Seven Seas Cruises (USA) - Norwegian Cruise Lines

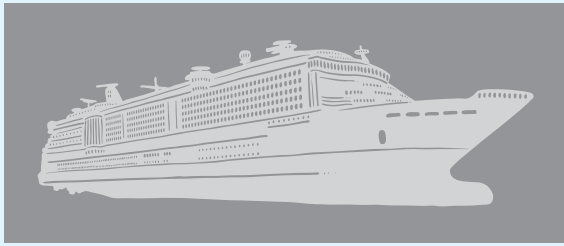
1 – 54,000 GT cruise ship  
Equipped with COMPAC bearings  
Delivered: 2016  
Fincantieri (Italy)



## Seabourn Cruise Lines (USA) - Carnival Corp.

4 cruise ships ranging from 32,200 GT to 40,350 GT  
Equipped with COMPAC bearings  
Delivered: 2009 - 2017  
Mariotti (Italy)





## Viking Ocean Cruises (Switzerland)

1 – 47,800 GT cruise ship **on order**

To be equipped with COMPAC bearings

Delivery: 2022

Fincantieri (Italy)



## Viking Ocean Cruises (Switzerland)

4 – 47,800 GT cruise ships

Equipped with COMPAC bearings

Delivered: 2015 - 2018

Fincantieri (Italy)







### **Alaskan Ferries (USA)**

2 Alaska Class ferries  
Equipped with COMPAC bearings  
Delivered: 2018  
Vigor Industrial Shipyard (USA)



### **Anek Lines (Greece)**

1 –9,851 GT ferry  
Converted to SXL bearings & ThorShield  
Delivered: 2015



### **ANMEZ AE (Greece)**

1–6,307 GT passenger ferry  
Equipped with SXL bearings  
Delivered: 2013  
Elefsis Shipyard (Greece)



### **BC Ferries (Canada)**

10 ferries ranging from 6,555 GT to 6,969 GT  
Equipped with COMPAC bearings  
Delivered: Since 2003  
Washington Marine Group (Canada)



### **Grimaldi Group (Italy)**

2–49,257 GT ferries  
Equipped with COMPAC bearings  
Delivered: 2001 - 2002  
Marina di Carrara (Italy)



### **New York City Staten Island Ferries (USA)**

3–5,901 GT ferries  
Equipped with COMPAC bearings  
Delivered: 2004 - 2006  
Marinette Marine (USA)





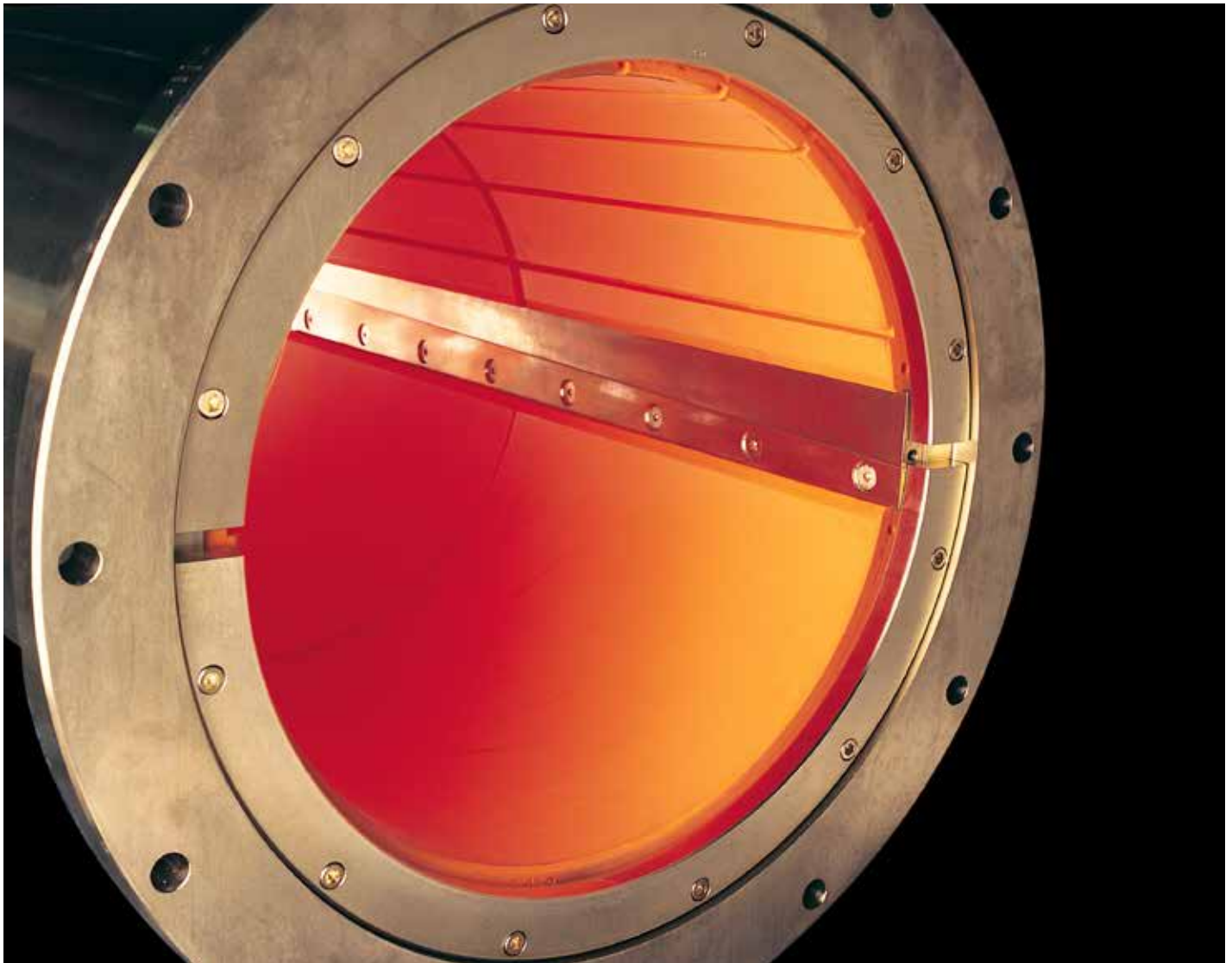
## Sado Kisen (Japan)

1 passenger ferry  
Equipped with SXL bearings  
Delivered: 2014  
Kanda Shipyard (Japan)



## Société des traversiers du Québec (Canada)

6–1,500 GT ferries  
Equipped with COMPAC bearings  
Delivered: 1996 - 2002  
MIL Davie Industries (Canada)





## China Oilfield Services Limited (China)

5 – 2,300 DWT AHTS vessels  
Equipped with COMPAC bearings  
Delivered: 2016  
Wuhan Shipbuilding & Fujian Mawei Shipbuilding (China)



## China Oilfield Services Limited (China)

7 – 12,000 HP AHTS vessels  
Equipped with COMPAC bearings & WQP  
Delivered: 2014 - 2015  
Shanghai, Shipyard (China); Wuhan Shipbuilding (China)



## Great Offshore (India)

3 AHTS vessels ranging from 2,339 DWT to 3,319 DWT  
Equipped with COMPAC bearings  
Delivered: 2007, 2009, 2010  
Great Eastern Shipping (India)



## Seacor Marine (USA)

5–4,500 DWT AHTS vessels  
Equipped with COMPAC bearings  
Delivered: 2007 - 2008  
Bender Shipbuilding (USA)



## Tidewater Inc. (USA)

5 AHTS vessels ranging from 3,297 DWT to 4,500 DWT  
Equipped with COMPAC bearings  
Delivered: 2005 - 2006  
ENVAI Shipyard (Brazil)







### **China Oilfield Services Limited (China)**

3 seismic vessels, 1 deepwater 2D seismic vessel  
Equipped with COMPAC bearings & WQP  
Delivered: 2014 - 2015  
Shanghai, Shipyard (China)



### **COSCO (China)**

2 – 18,500 DWT car carriers equipped with COMPAC bearings  
1 – 90,000 DWT semi-submersible vessels equipped with  
COMPAC bearings, WQP & ThorShield  
Delivered: 2009 - 2017  
COSCO Zhoushan, Nantong, Shanghai, Guangzhou (China)



### **Heerema Engineering Services (Netherlands)**

2–59,344 DWT offshore vessels  
Equipped with COMPAC bearings  
Delivered: 2001, 2004  
Drunen, Verolme Botlek Shipyard (Netherlands)



### **Heroyhav (Norway)**

1 fishing vessel  
Equipped with COMPAC bearings  
Delivered: 2013  
Karstensen Shipyard (Norway)



### **Louis - Dreyfus Armateurs (France)**

3 cable ships ranging from 9,820 DWT to 10,000 DWT  
Equipped with COMPAC bearings  
Delivered: 2001 - 2002  
Hyundai Mipo Shipyard (South Korea)



### **PEVASA Group (Spain)**

1 tuna fishing vessel  
Equipped with COMPAC bearings & WQP  
Delivered: 2014  
Astilleros de Murueta Shipyard (Spain)





3225 Mainway, Burlington, Ontario  
L7M 1A6 Canada

Tel: +1.905.335.1440 Fax: +1.905.335.4033  
[www.ThordonBearings.com](http://www.ThordonBearings.com)

ZERO POLLUTION | HIGH PERFORMANCE | BEARING & SEAL SYSTEMS

Revised: December 6, 2021